



## GEOLOGÍA ESTRUCTURAL

### TEMA 8

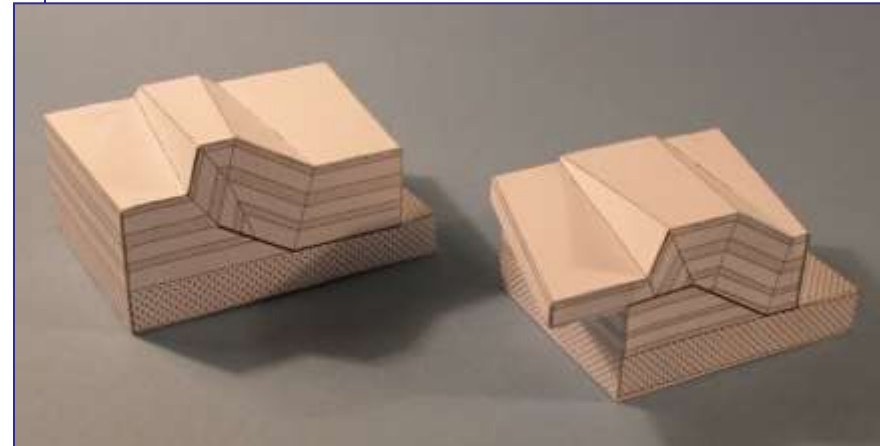
#### RELACIONES ENTRE PLIEGUES Y FALLAS.

- 1. PLIEGUES RELACIONADOS CON FALLAS.** PLIEGUES POR FLEXIÓN Y PROPAGACIÓN DE FALLAS, PLIEGUES POR DESPEGUE..
- 2. FALLAS ASOCIADAS A PLIEGUES:** FALLAS TIPO FLEXO-DESLIZANTES, BENDING-MOMENT Y OBLICUAS A LA ESTRATIFICACIÓN. RELACIONES ENTRE TECTÓNICA Y SEDIMENTACIÓN. ESTRATOS DE CRECIMIENTO, DISCORDANCIAS PROGRESIVAS

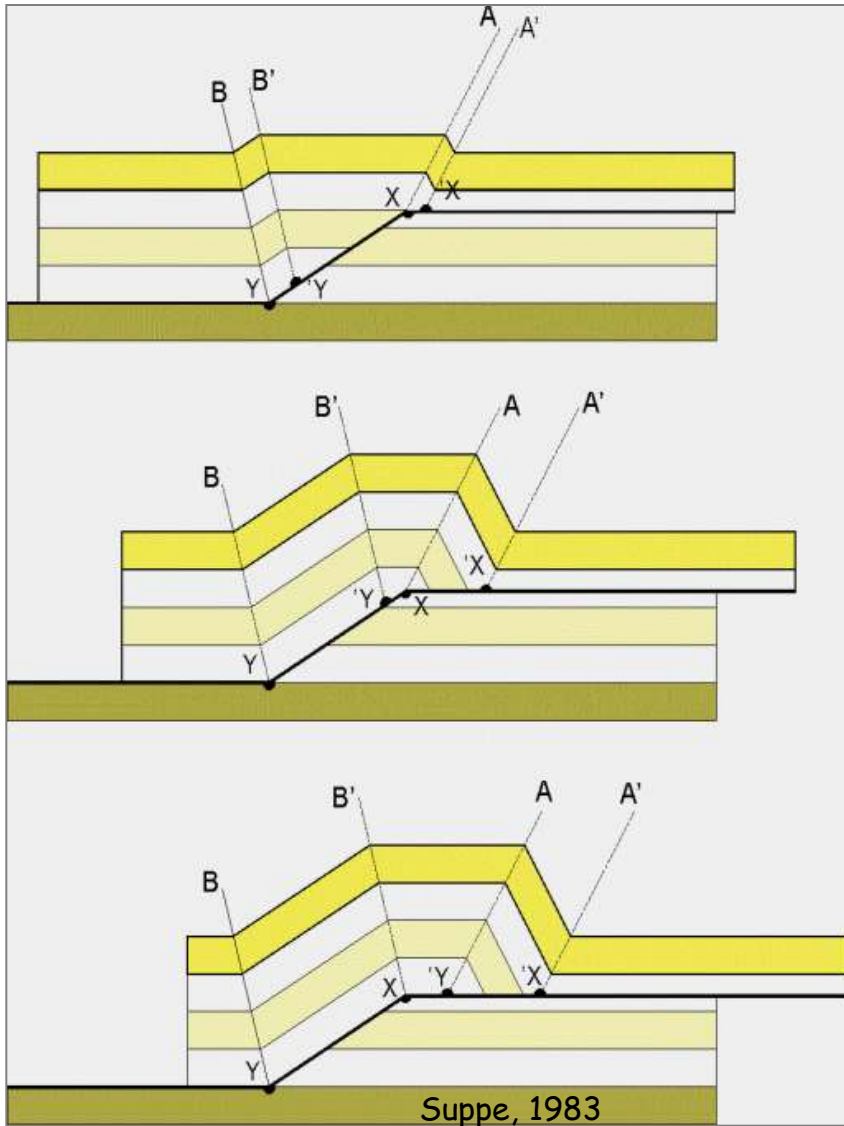
#### RELACIONES ENTRE PLIEGUES Y FALLAS:

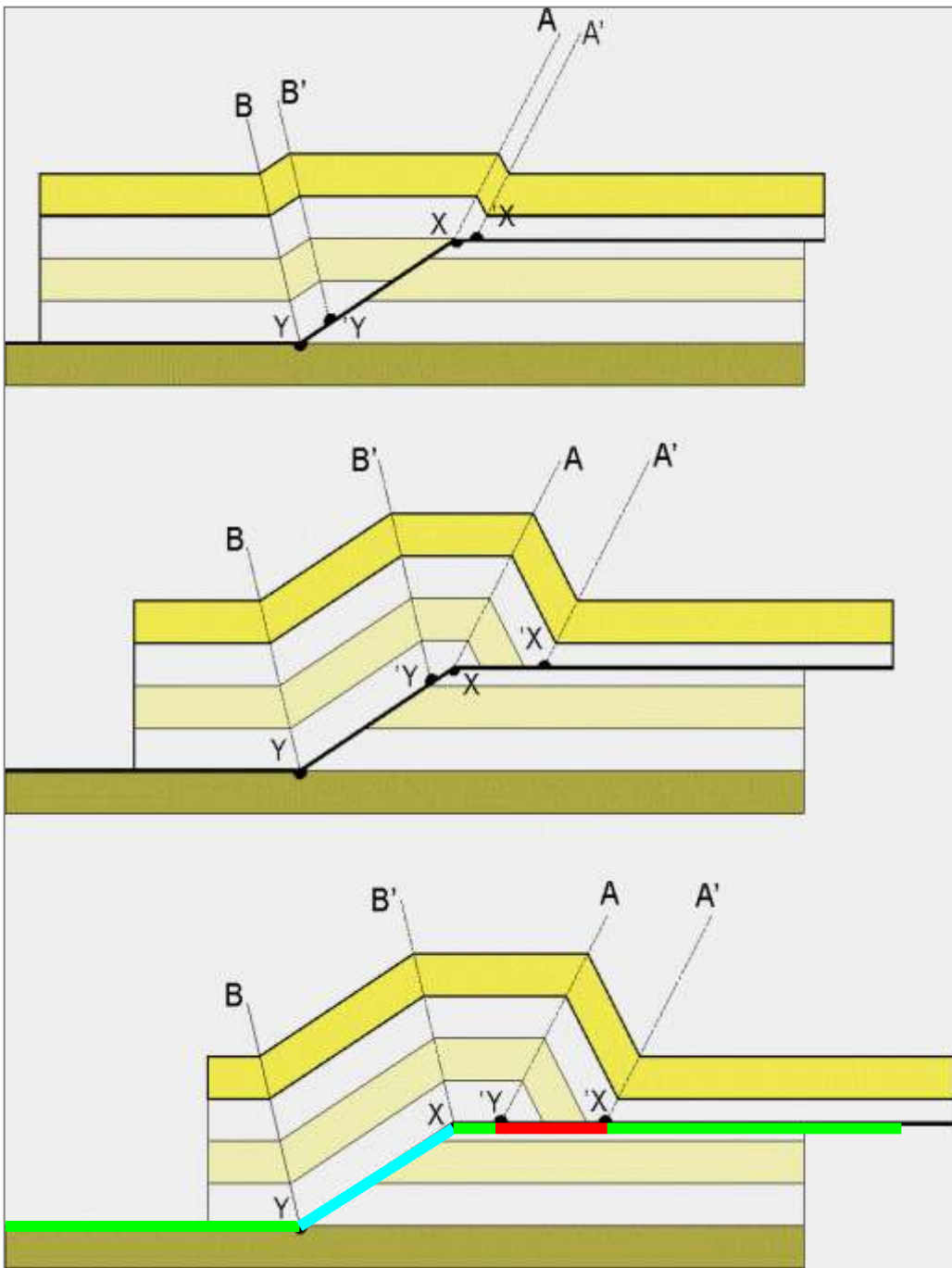
##### 1. PLIEGUES RELACIONADOS CON FALLAS

- . PLIEGUES POR FLEXIÓN DE FALLA
- . PLIEGUES POR PROPAGACIÓN DE FALLA  
(PLIEGUE POR PROPAGACIÓN DE CIZALLA TRIANGULAR “TRISHEAR”)
- . PLIEGUES POR DESPEGUE



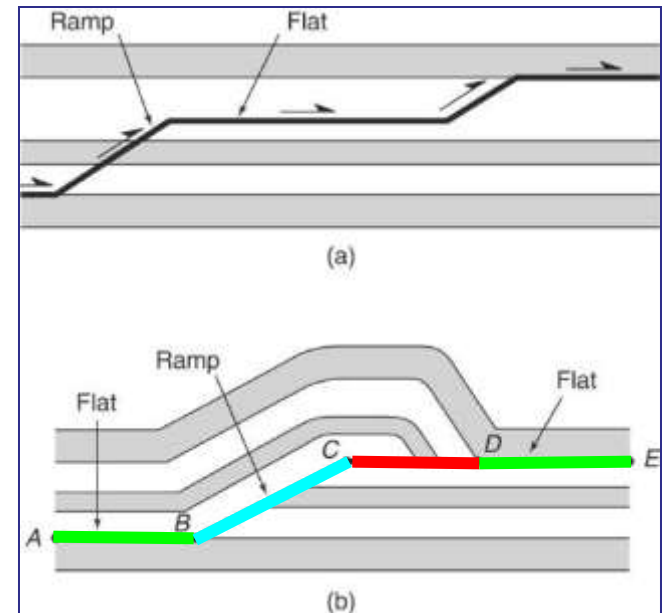
# Plegamiento por flexión de falla (*fault-bend folding*)





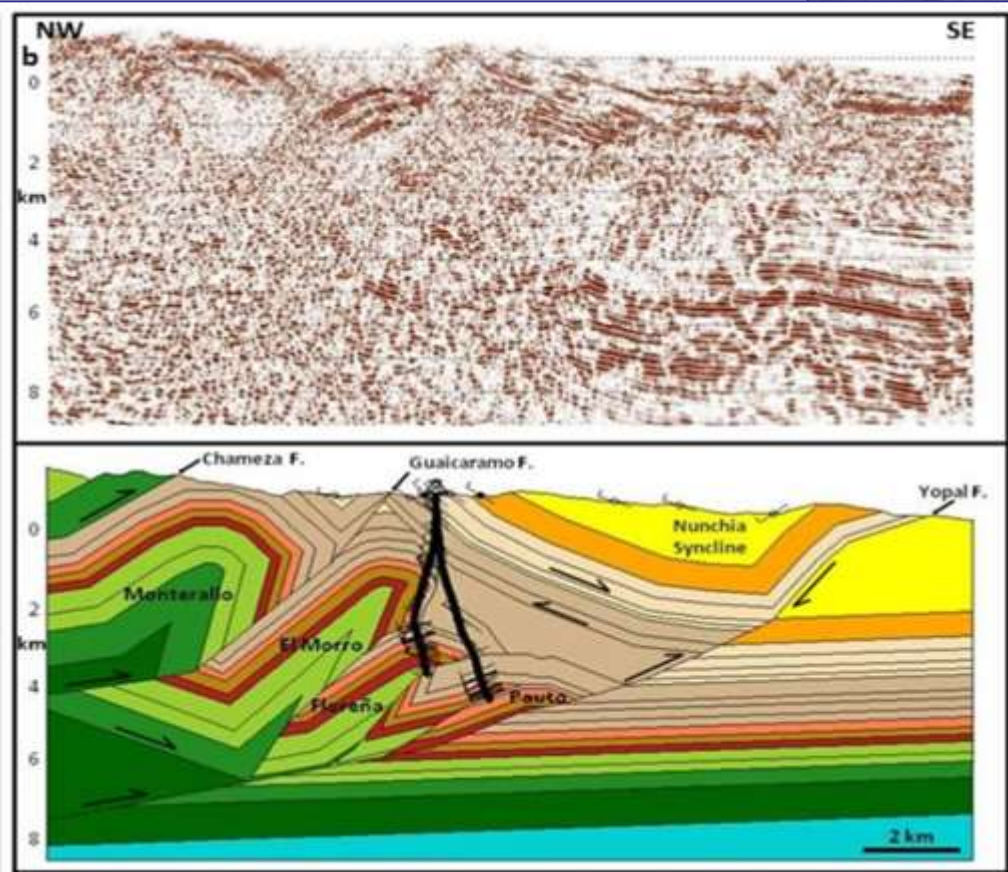
RELACIONES:

- █ PLANO-PLANO (flat-flat)
- █ PLANO-RAMPA (flat-ramp)
- █ RAMPA-PLANO (ramp-flat)



SIEMPRE QUE SE GENERA UNA RAMPA, ES DECIR UNA VARIACIÓN BRUSCA EN EL ÁNGULO DEL FALLAMIENTO, SE PRODUCEN FLEXURAS/DEFORMACIONES EN LOS ESTRATOS INFRA O SUPRAYACENTES A LA MISMA.

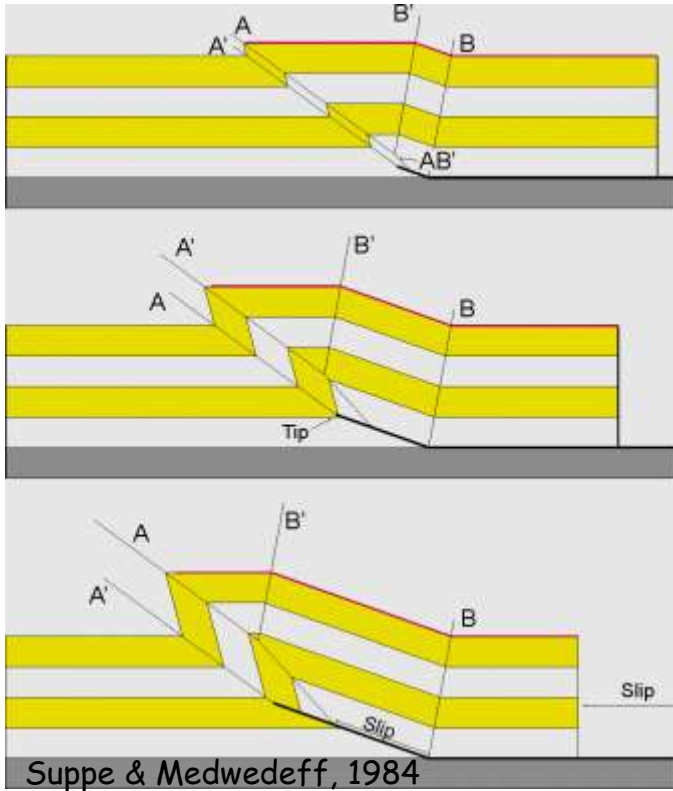
PLIEGUES EN CALIZAS, >>>>  
TALACASTO, SAN JUAN



<<< Frente Orogénico Andino, Colombia

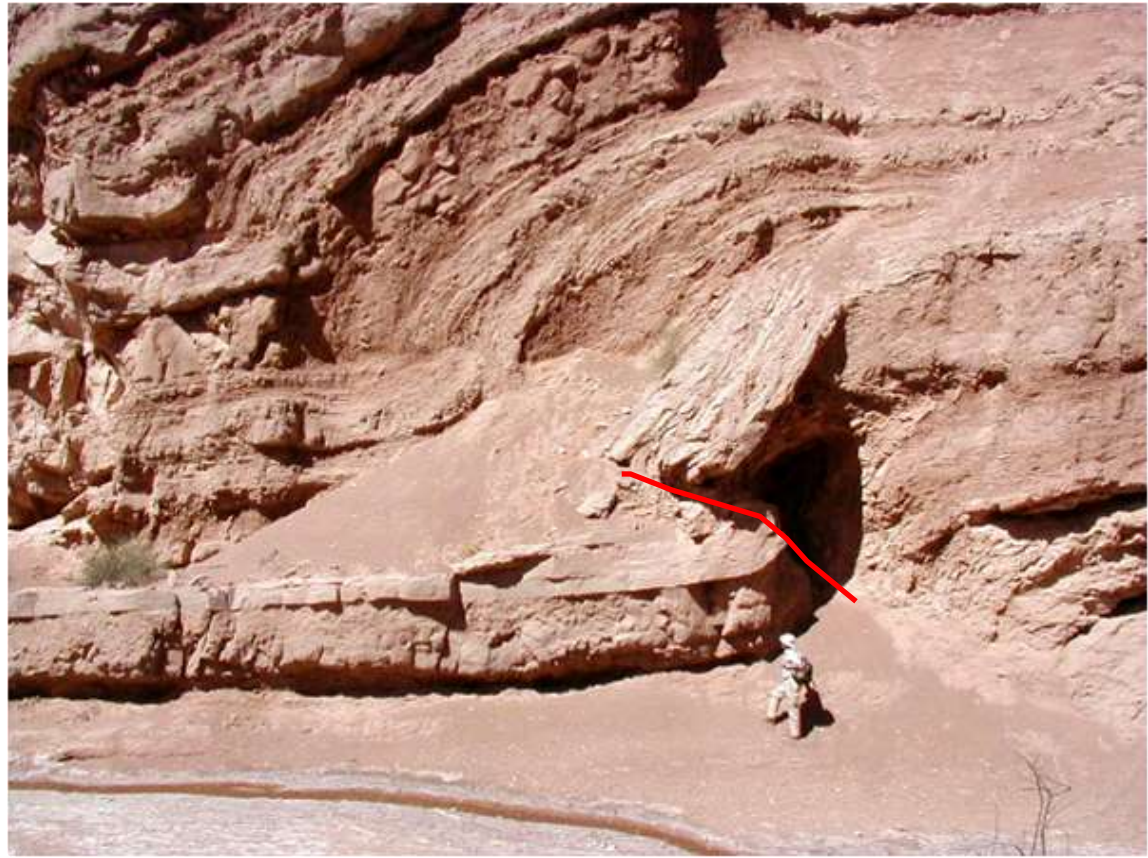
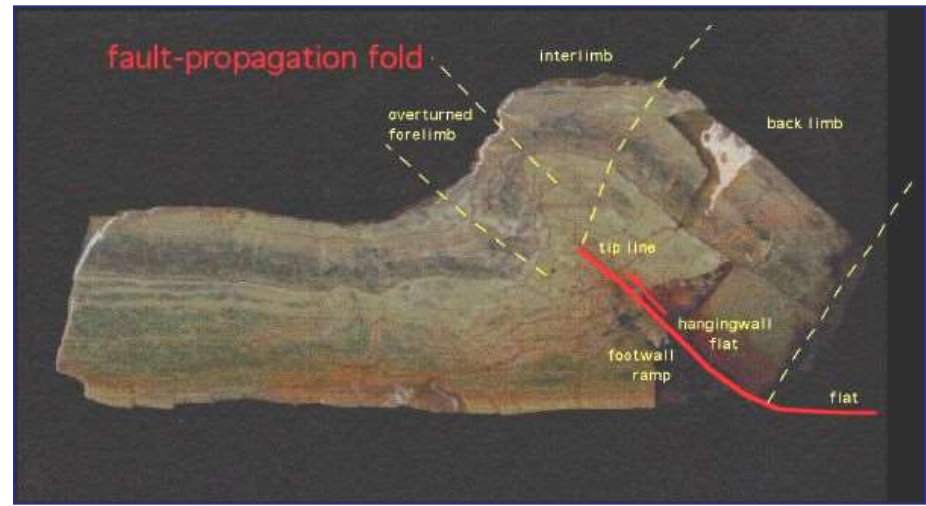
[www.kelloginternational.com](http://www.kelloginternational.com)

# Pliegue por propagación de falla

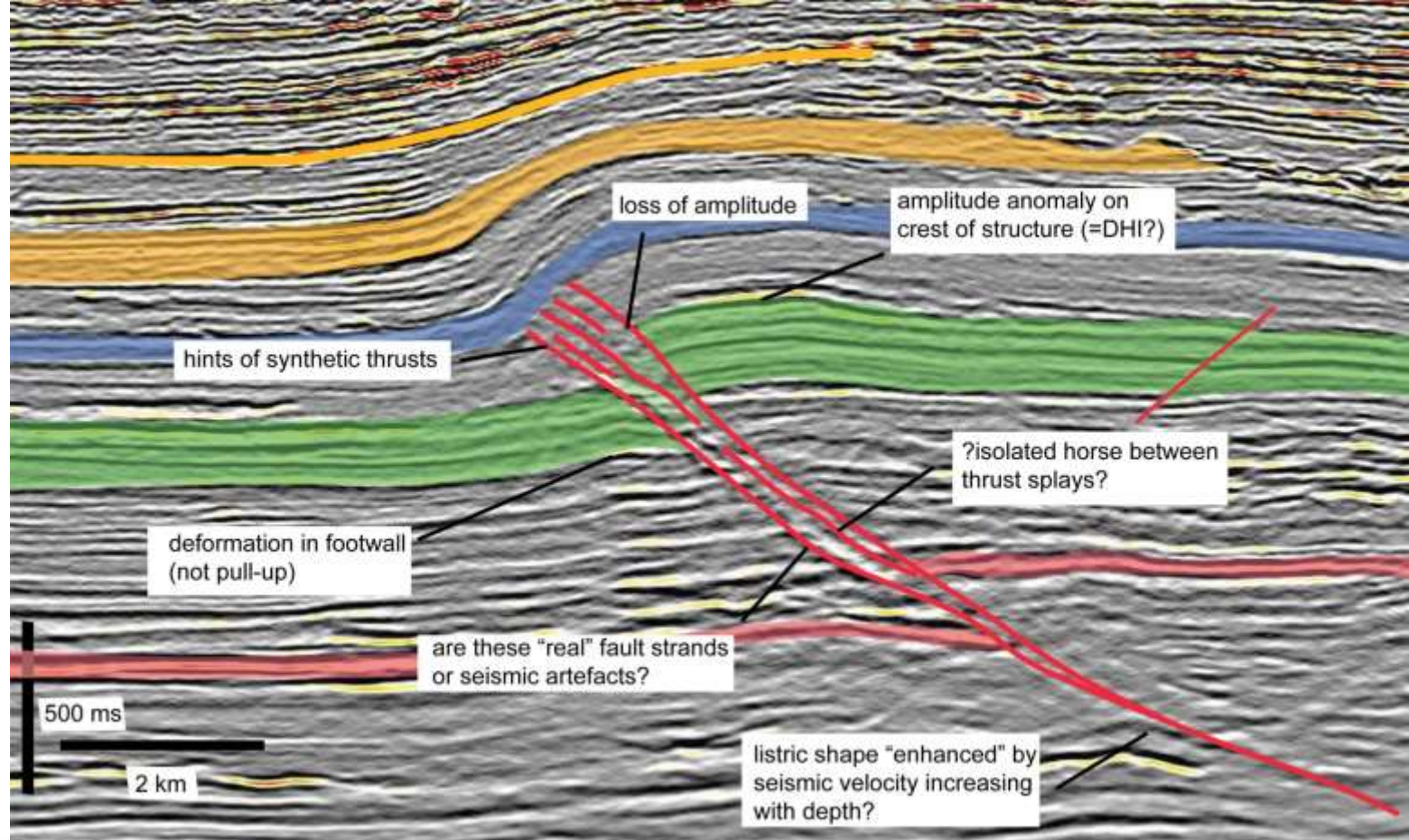


Suppe & Medwedeff, 1984

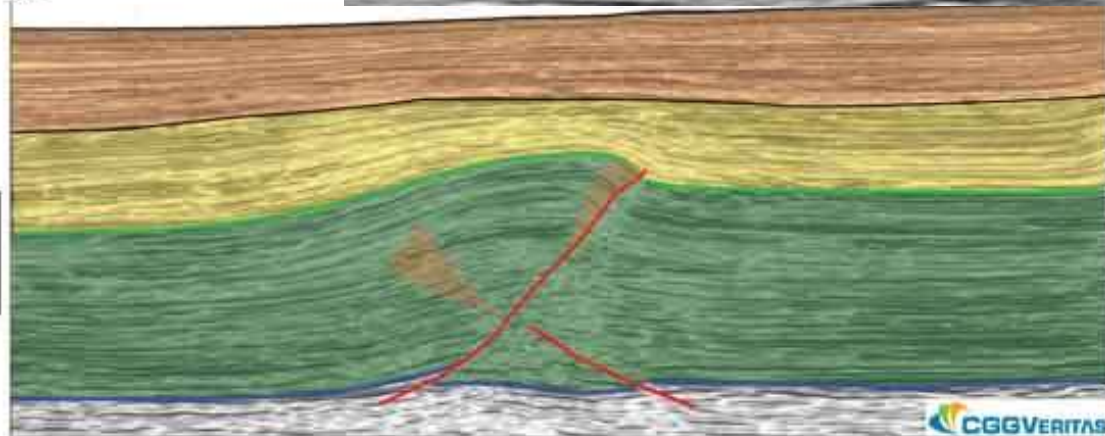
E. CRISTALLINI, FPC – 2005



Pliegue por propagación de falla  
Sierra de Las Peñas, Mendoza >>>



SE

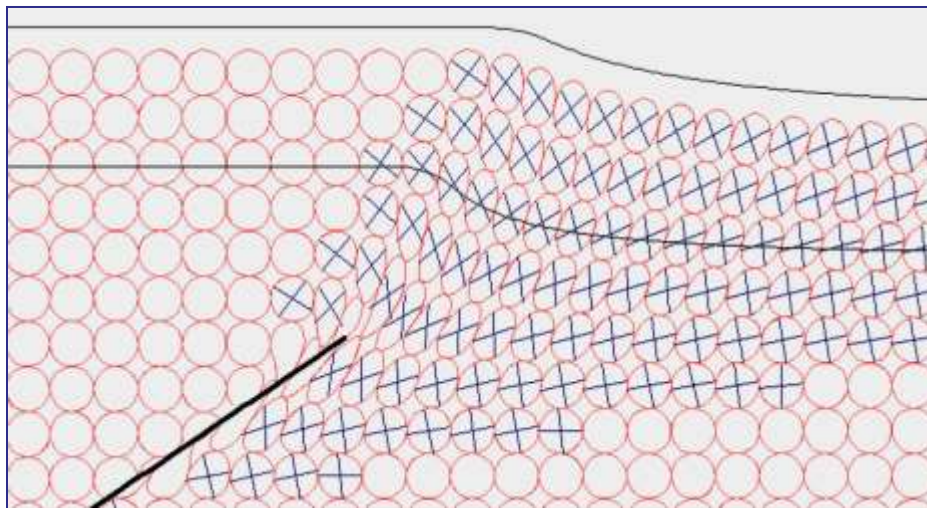


line 18

9.5 km

seismicatlas.org

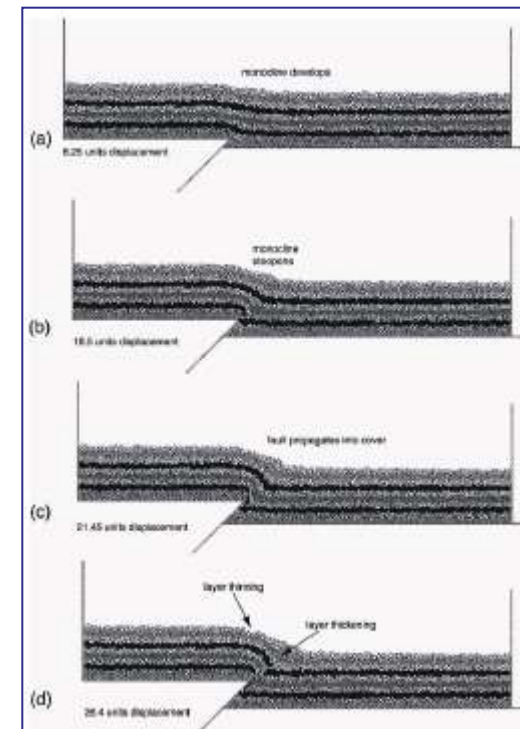
## Pliegues por propagación de cizalla triangular (*Tri-shear folds*)



Modelo según R Allmendinger: [www.geo.cornell.edu/geology](http://www.geo.cornell.edu/geology).

Los pliegues asociados a cizalla triangular (Erslev, 1991) corresponden a un modelo cinemático alternativo a l modelo de Suppe, para explicar las geometrías resultantes de la propagación de una falla. Es decir, ambos aplican a Pliegues por Propagación de Fallas (PPF).

### PPF según trishear



### PPF según Suppe

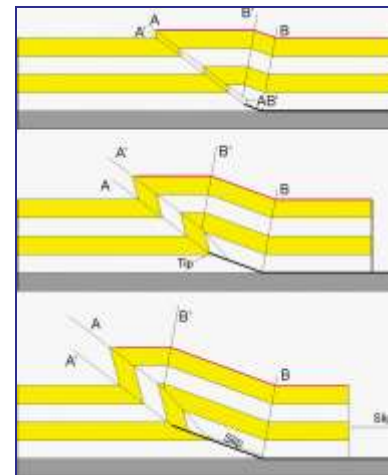


Foto: E. Ahumada

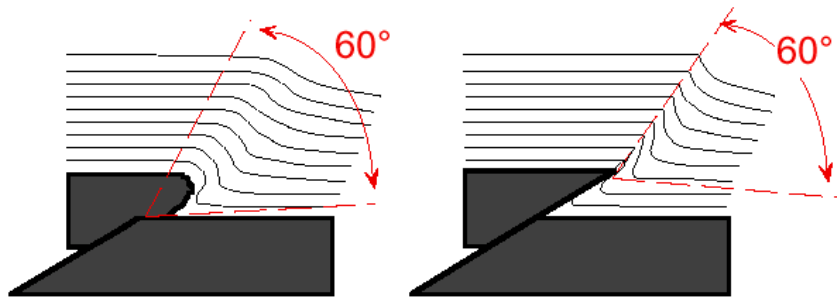
Pliegues por propagación de falla



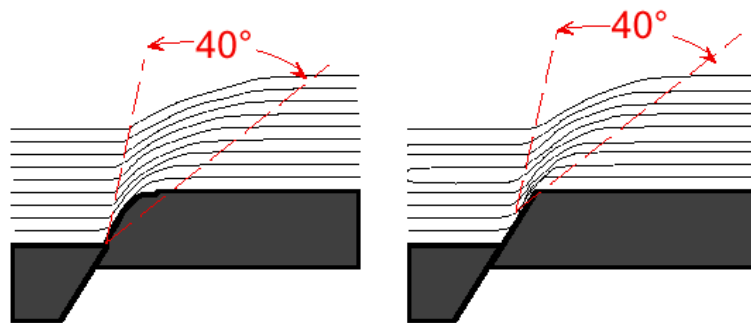
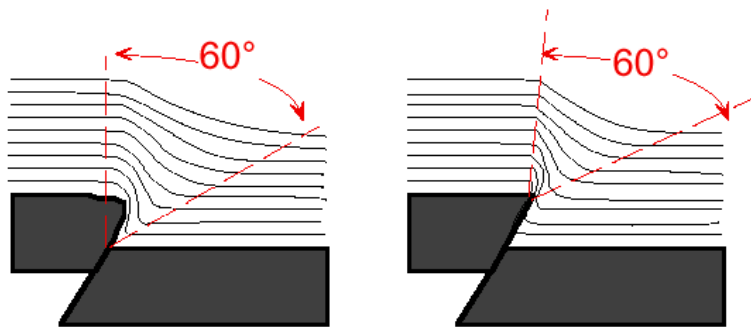
Foto: E. Cristallini



Salinas, Ecuador  
(Costa et al., 1999)

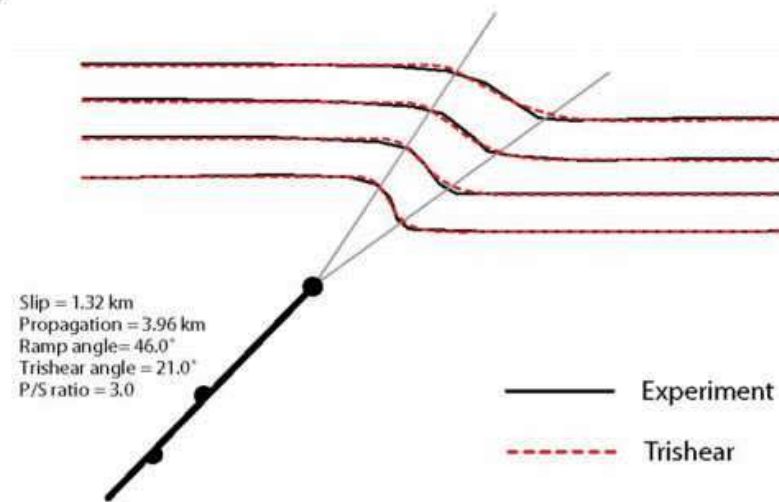


moves out of the plane because  
triangular zone intersects edge of model

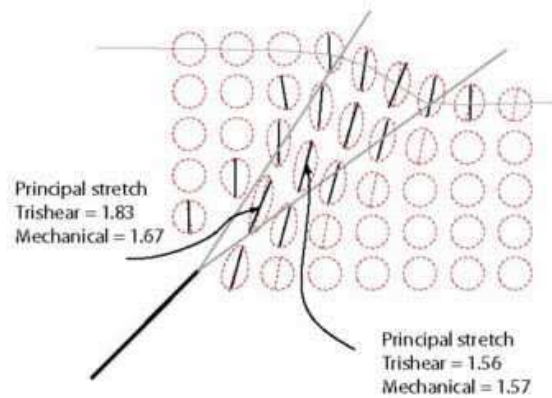


### Frictionless & Perfectly plastic

#### Geometry



#### Strain



- X axes in experiment
- - - Trishear ellipses

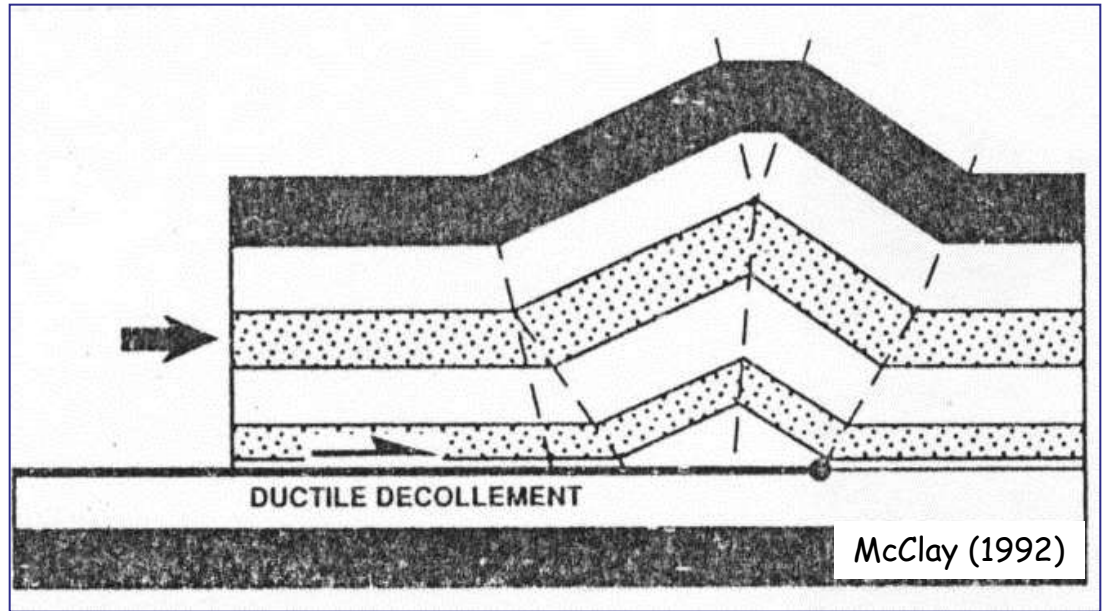


Cardozo et al. 2002

. PLIEGUES POR DESPEGUE  
(*Detachment folds*)



Sevier Orogenic Belt, Montana, USA



Q. De las Burras, Talacasto, San Juan

DETACHMENT FOLDS/  
PLIEGUES POR DESPEGUE

detachment fold



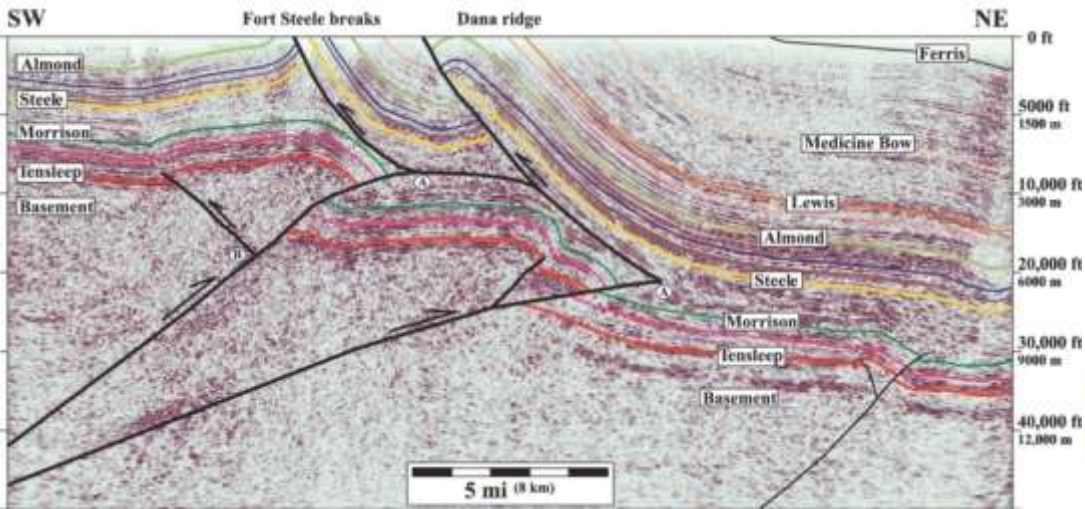
Photo of the Rundle Thrust from web site of R. Allmendinger  
[http://www.geo.cornell.edu/geology/classes/RWA/GS\\_326/326\\_Gallery.html](http://www.geo.cornell.edu/geology/classes/RWA/GS_326/326_Gallery.html)



Rocky Mountains, Alberta, Canada  
Foto J Shaw



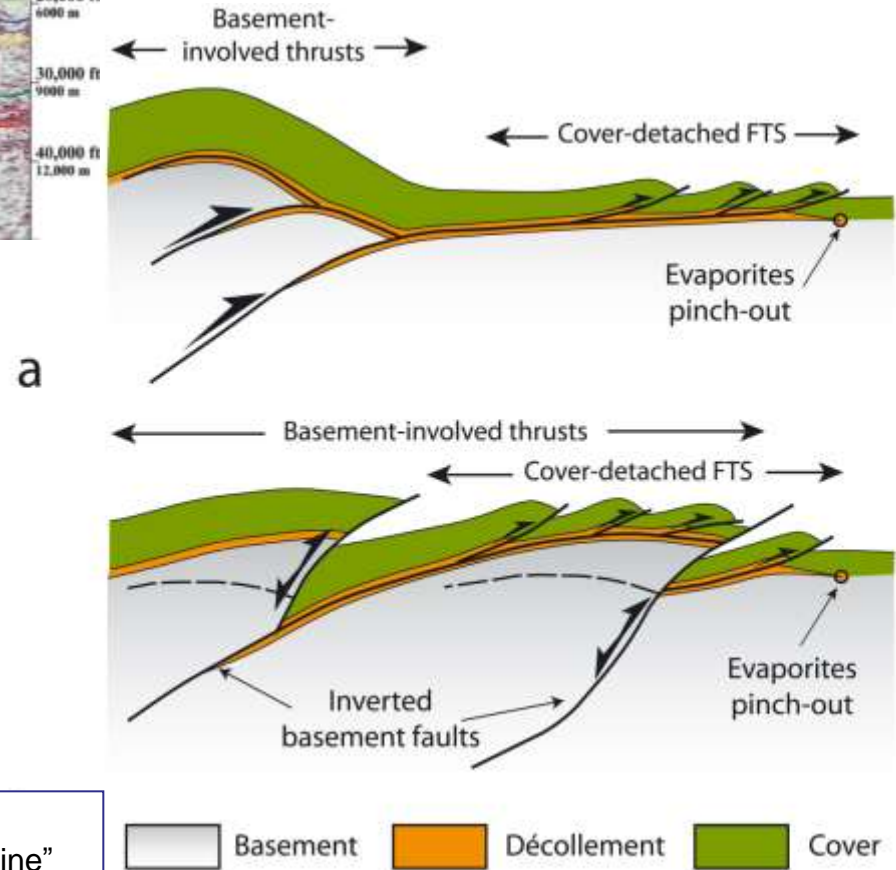
Geología Estructural, UNSL 2013



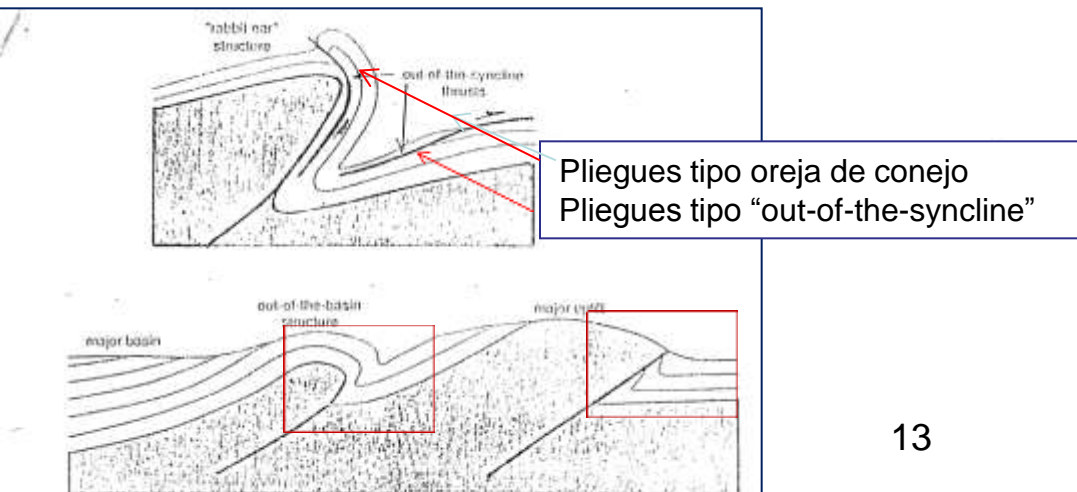
<https://geomodelsvt.wordpress.com/2019/05/14/back-to-the-rocky-mountain-front-range-thrust-faults-at-a-thick-skinned-structural-front/>

## Pliegues con basamento involucrado

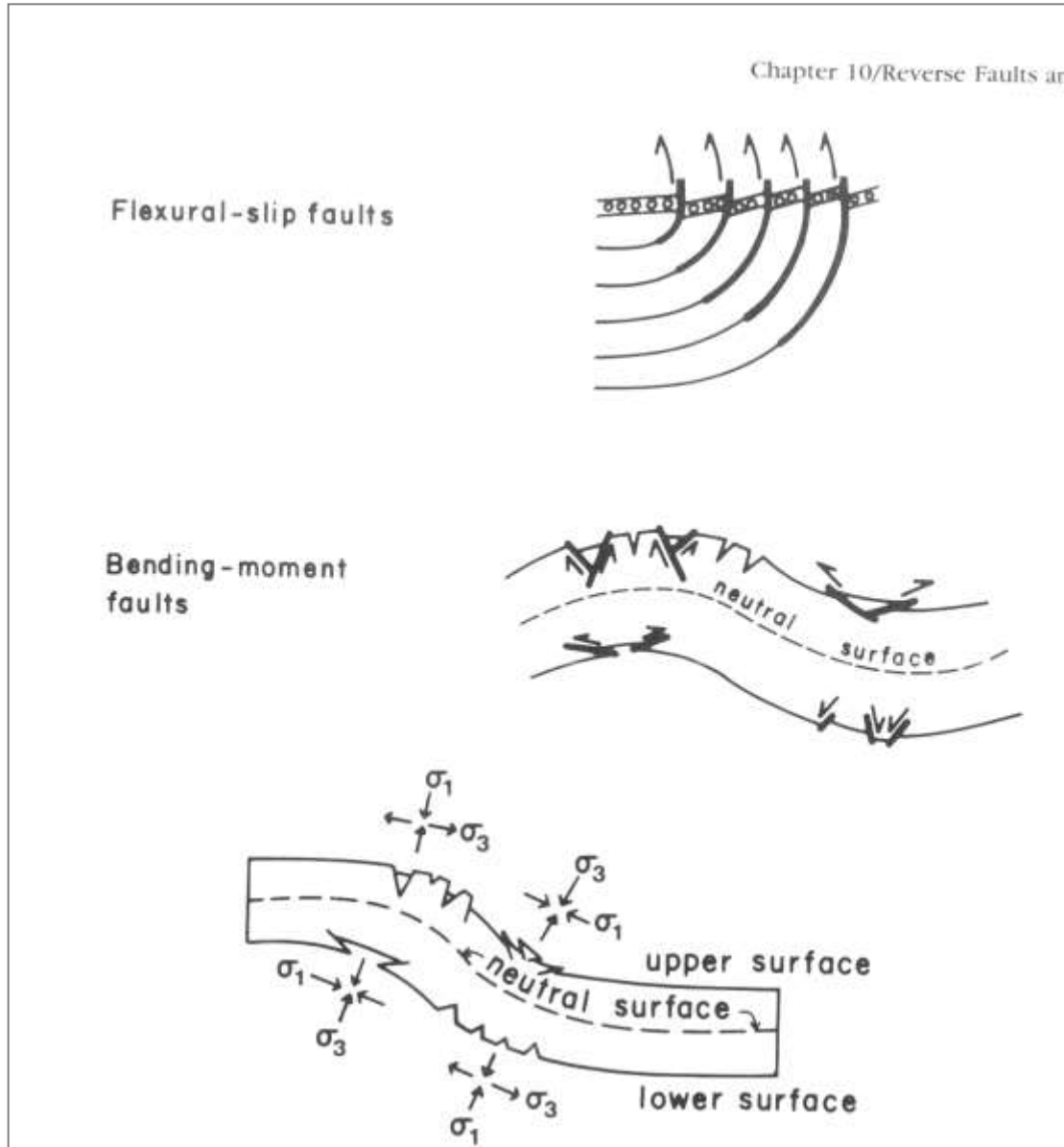
(Basement-cored folds, thick-skinned folds, drape folds)



<https://agupubs.onlinelibrary.wiley.com/doi/abs/10.1029/2018TC005422>



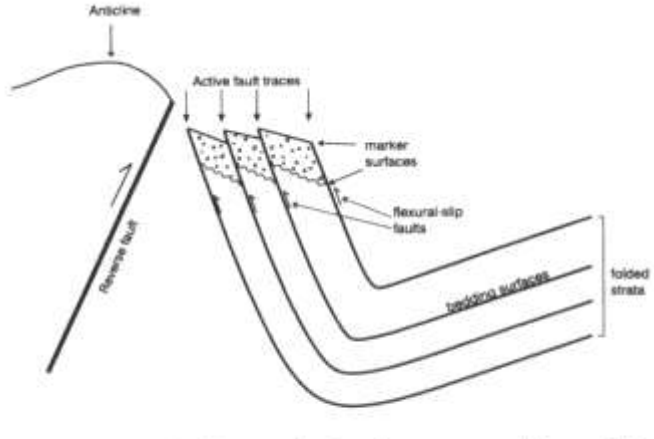
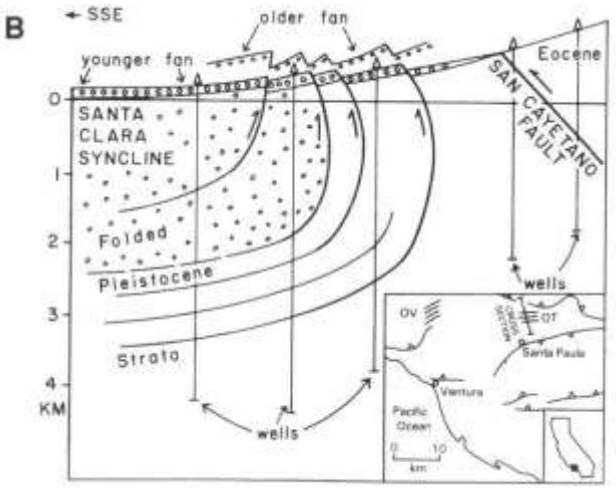
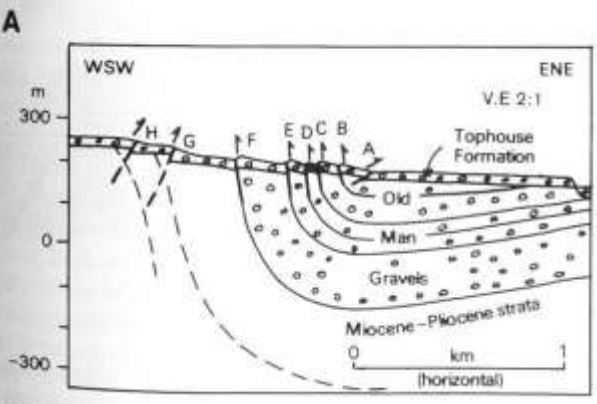
## 2. FALLAS RELACIONADAS CON PLIEGUES



2.1 Fallas flexo-deslizantes

2.2 Fallas “bending-moment”

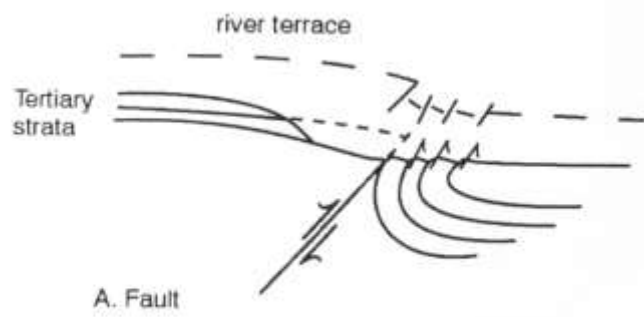
# 2.1 Fallas flexo-deslizantes



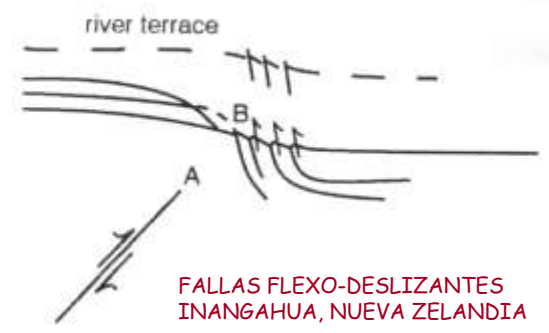
**Fallas flexo-deslizantes**  
N. Zelandia y California (Yeats, 1986)



Blanquitos, San Juan




A. Fault



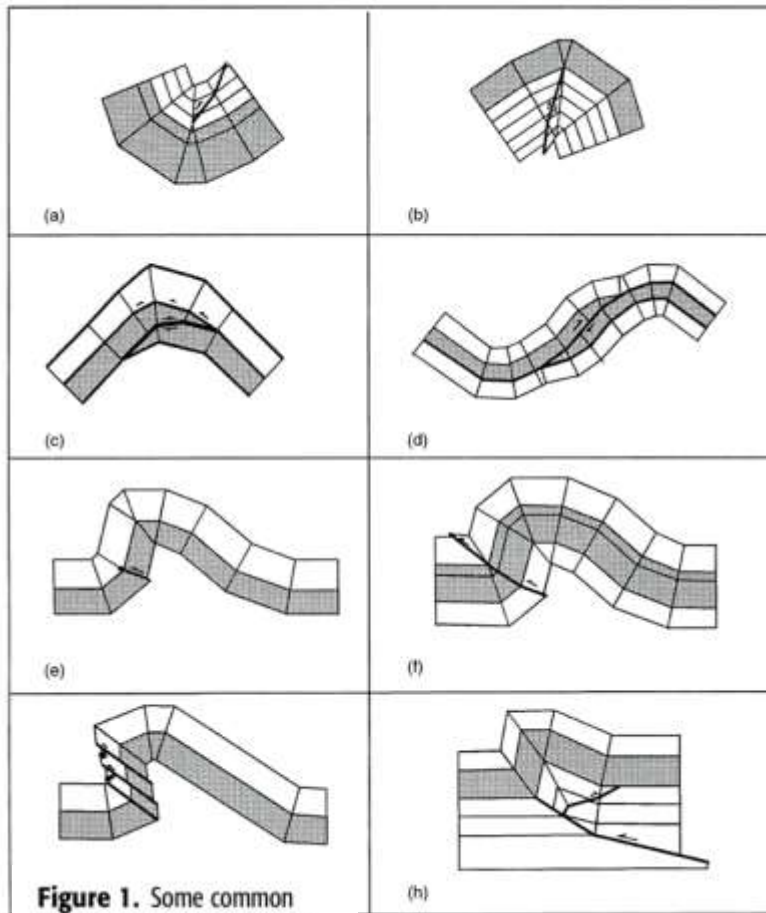
B. Monocline and blind fault

FALLAS FLEXO-DESLIZANTES  
INANGAHUA, NUEVA ZELANDIA

Yeats (2000), Nicol y Nathan (2001)

An aerial photograph showing a vast, mountainous landscape. In the foreground, a large, rugged mountain range is visible, characterized by numerous ridges and valleys. A prominent red oval is drawn around a specific section of this mountain range, highlighting a particular area of interest. The terrain is a mix of brownish and greyish hues, suggesting rocky or sparsely vegetated ground. In the background, a wide valley opens up, leading to a large body of water, possibly a lake or a wide river. The sky is clear and blue, and the overall scene is captured from a high altitude, providing a panoramic view of the region.

FALLAS FLEXODESLIZANTES EN EL ABANICO ALUVIAL DE EL MOCHO  
PRECORDILLERA DE SAN JUAN

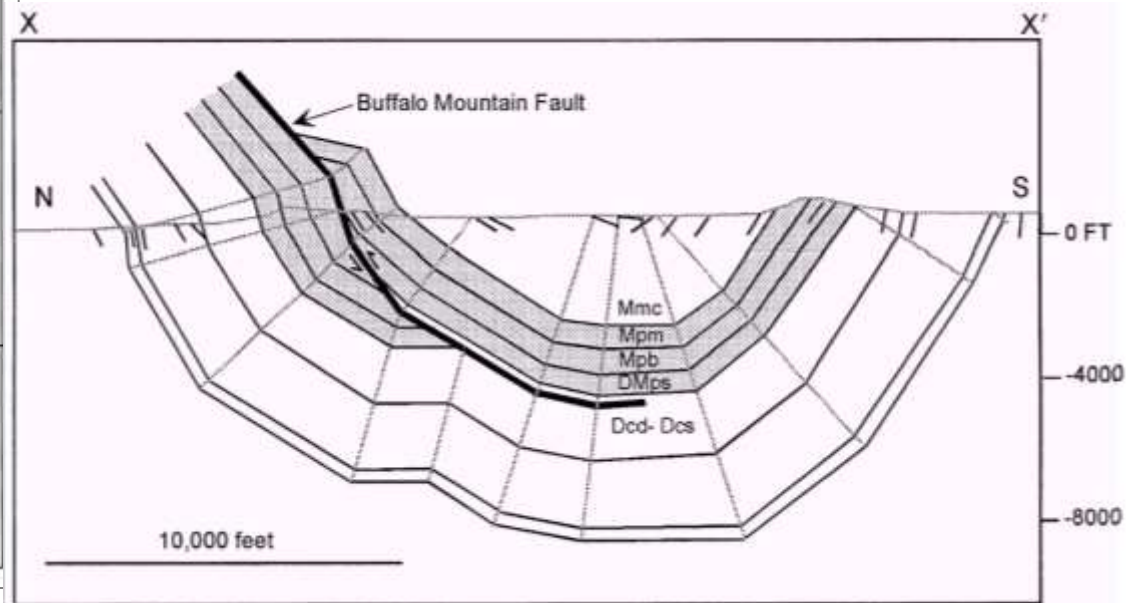


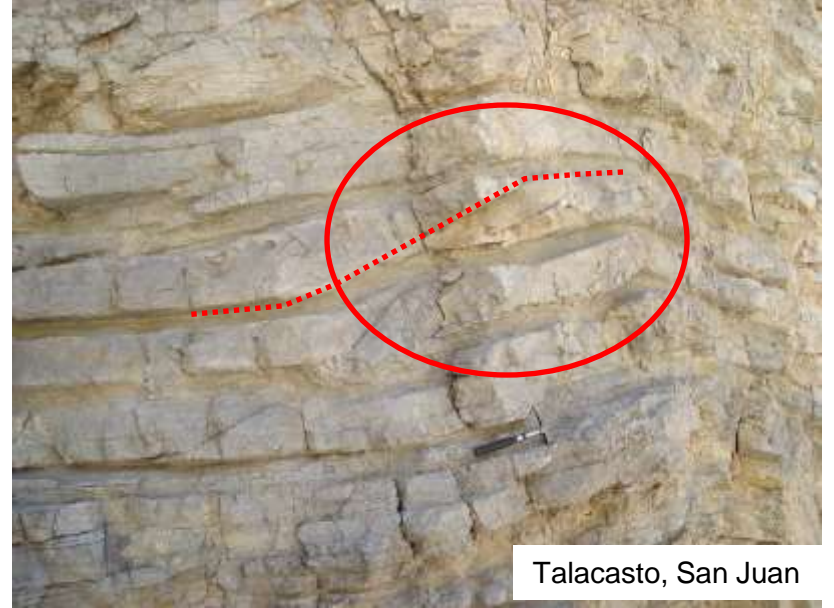
**Figure 1.** Some common types of fold accommodation faults: (a) out-of-syncline thrust propagating on the gently dipping limb; (b) into-anticline thrust propagating on the gently dipping limb; (c) hinge wedge thrust; (d) limb wedge thrust; (e) forelimb space-accommodation thrust; (f) forelimb-backlimb thrust; (g) forelimb shear thrusts; (h) back thrust.

Mitra, 2002

Tomado de: Curso FPC –  
CRISTALLINI 2005

Combinan deslizamiento inter-estratal con rampas localizadas





Talacasto, San Juan

Fallas de acomodación en núcleos de pliegues  
Margas y lutitas  
Sevier Orogenic Belt, Montana, USA



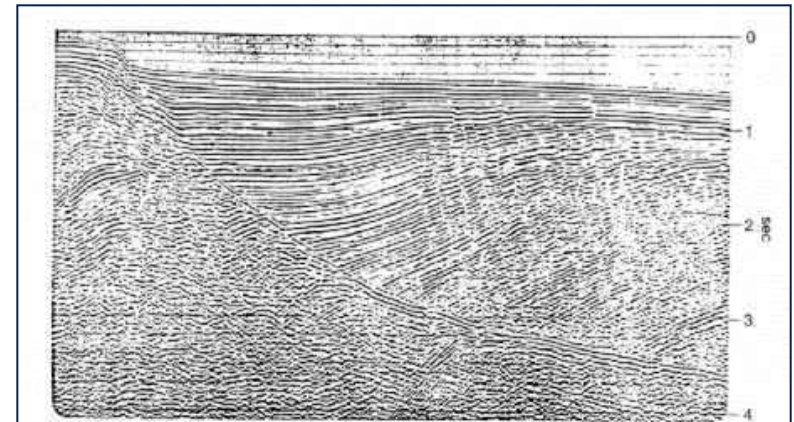
# RELACIONES ENTRE TECTÓNICA Y SEDIMENTACIÓN

## 1. FALLAS DE CRECIMIENTO

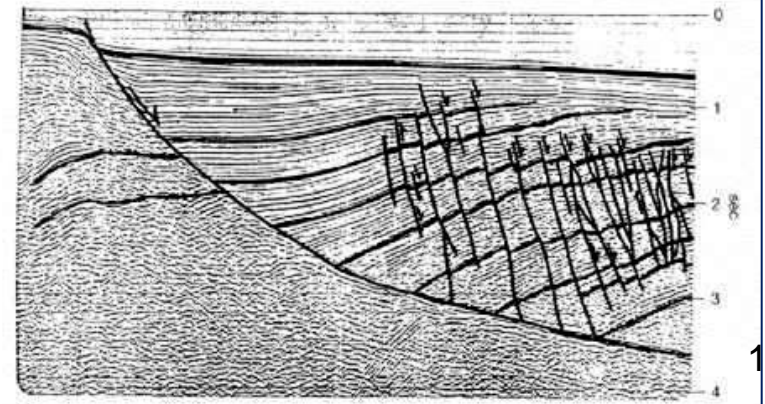
FALLAS EN LAS QUE EL DESPLAZAMIENTO ES CONTEMPORÁNEO O APROXIMADAMENTE SINCRÓNICO CON LA SEDIMENTACIÓN.

CARACTERÍSTICAS:

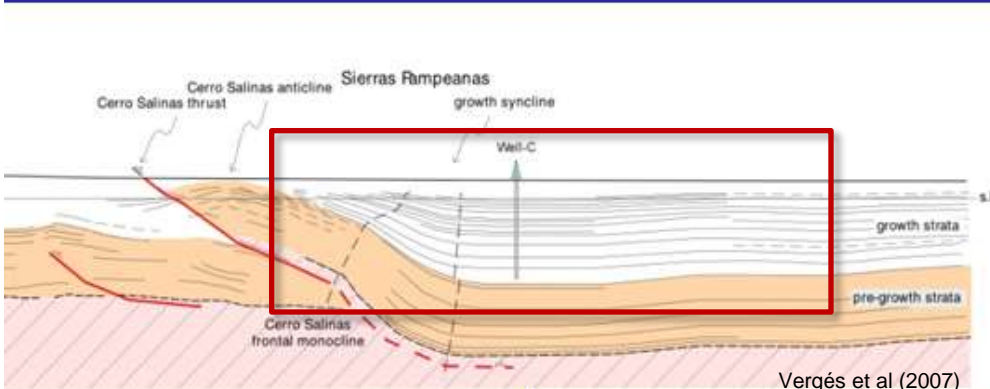
- \* ESTRATOS DE MAYOR POTENCIA EN EL LABIO BAJO
- \* DESPLAZAMIENTO ACUMULADO AUMENTA PROPORCIONALMENTE HACIA LOS ESTRATOS MÁS VIEJOS



A.

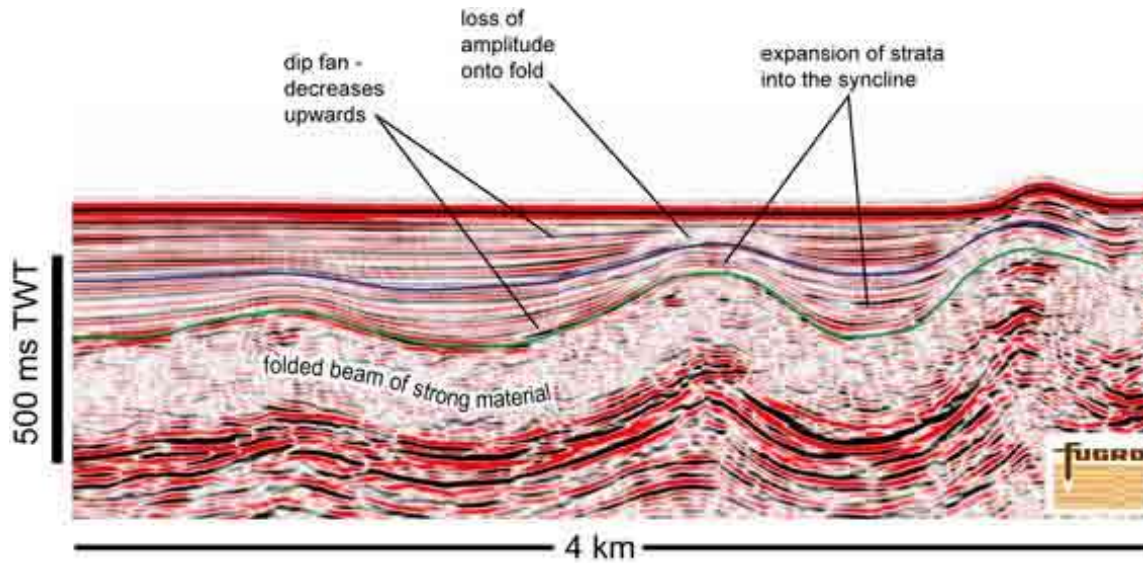


B.



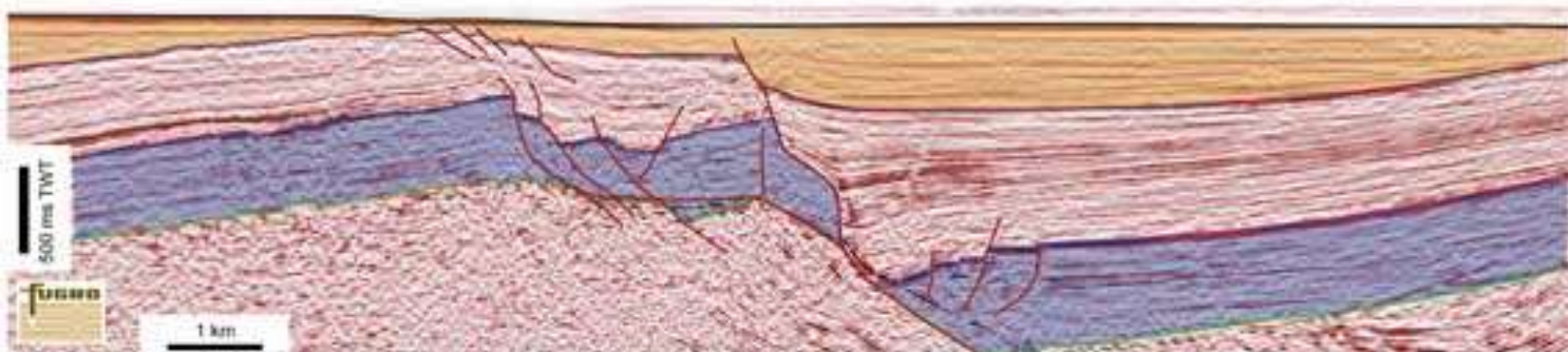


Falla de crecimiento asociada a deslizamientos. Cordillera de Ansilta, San Juan



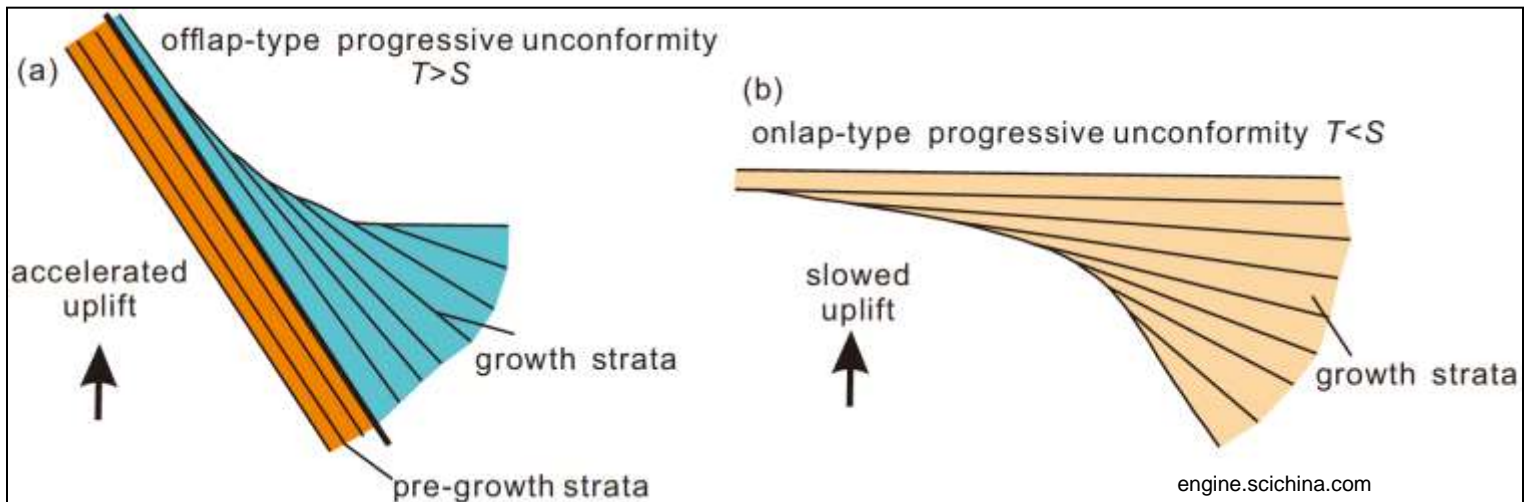
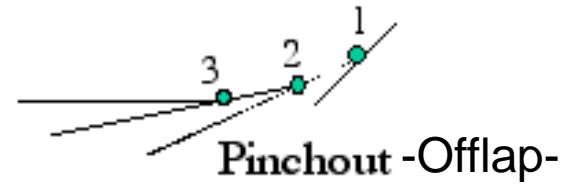
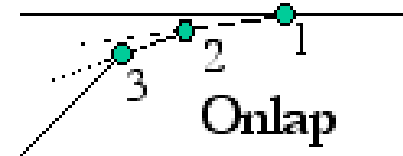
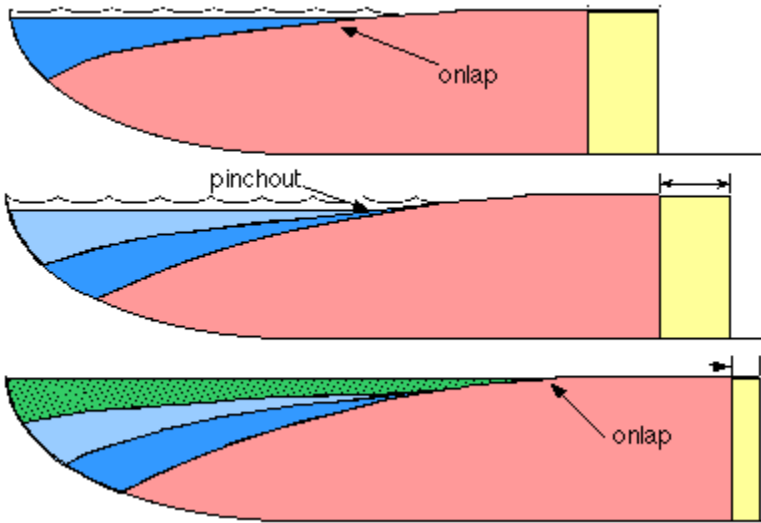
# ESTRATOS Y FALLAS DE CRECIMIENTO

seismicatlas.org



**ESTRATOS DE CRECIMIENTO:**

ESTRATOS CON GEOMETRÍA CUNEIFORME QUE INDICAN MODIFICACIONES CONTÍNUAS EN LA PENDIENTE DEPOSICIONAL DEBIDO A LEVANTAMIENTOS O HUNDIMIENTOS TECTÓNICOS LOCALIZADOS



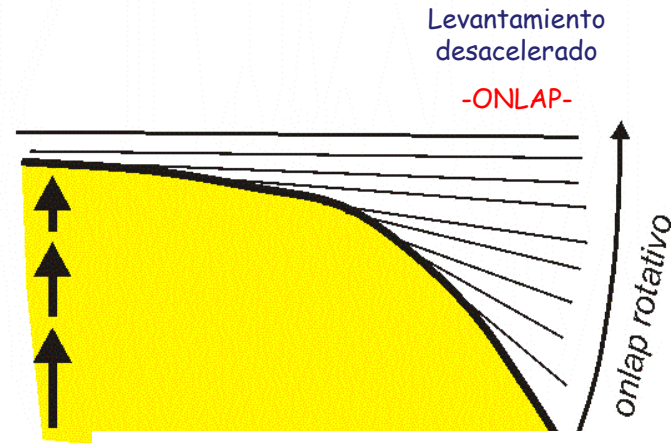
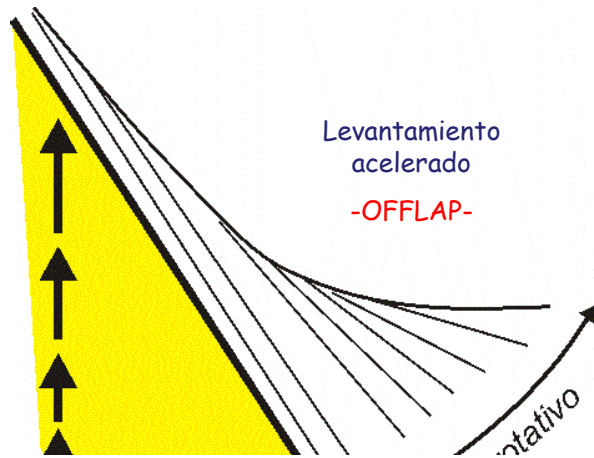
## DISCORDANCIAS PROGRESIVAS

**DISCORDANCIA PROGRESIVA SIMPLE:** CUÑA DE ACUMULACIÓN SINTECTÓNICA RELACIONADA CON UNA SUPERFICIE DEPOSICIONAL BASCULADA, POSIBLEMENTE VINCULADA A UNA ESTRUCTURA EN ASCENSO (FLANCOS ANTICLINALES, FRENTE DE CORRIMIENTO, ETC.-)

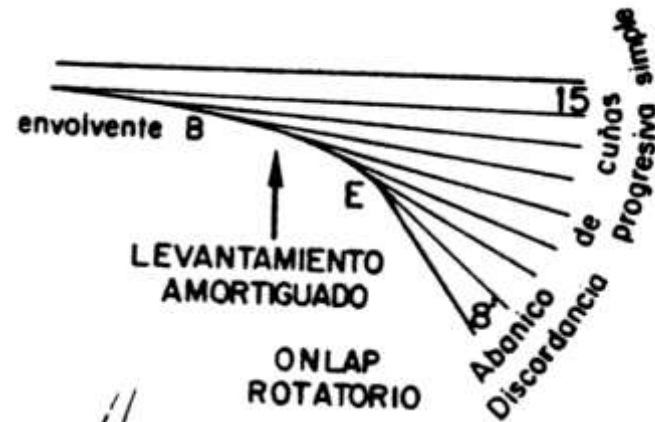
**OFFLAP ROTATIVO:** DESARROLLADO CON UNA TASA DE SEDIMENTACIÓN CONSTANTE, DURANTE UN PERÍODO DE LEVANTAMIENTO ACELERADO

**ONLAP ROTATIVO:** DESARROLLADO CON UNA TASA DE SEDIMENTACIÓN CONSTANTE, DURANTE UN PERÍODO DE LEVANTAMIENTO DESACELERADO.

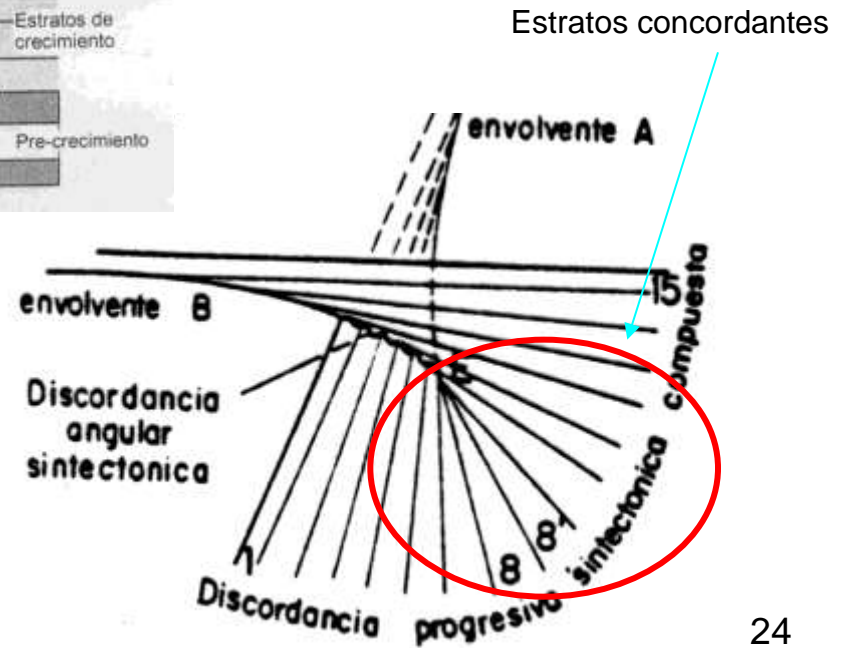
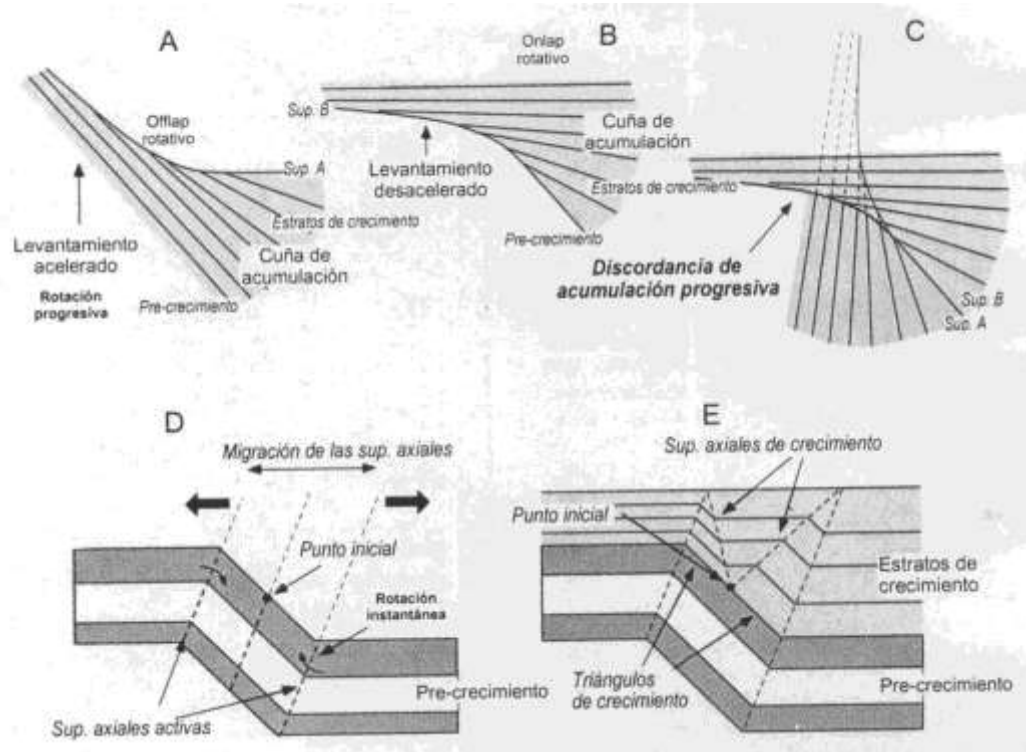
LA ESTRUCTURA DE LA CUÑA DE ACUMULACIÓN SINTECTÓNICA RESULTA DEL BASCULAMIENTO DE PLANOS ALREDEDOR DE UN EJE DE ROTACIÓN

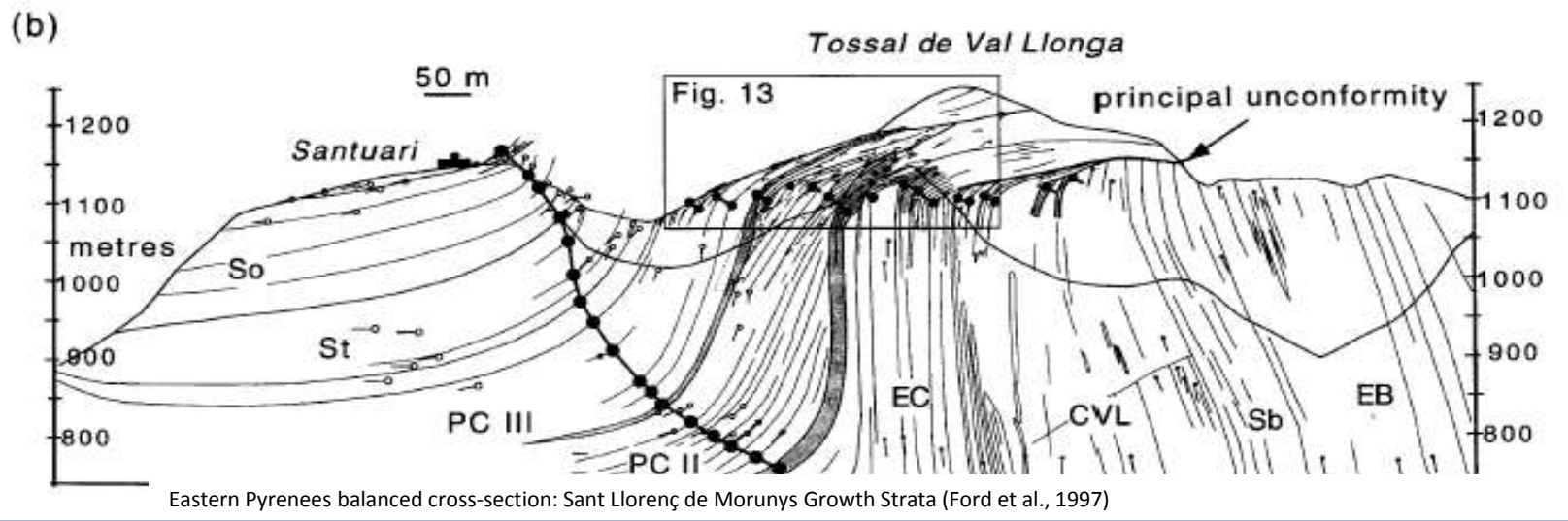


Riba, 1976

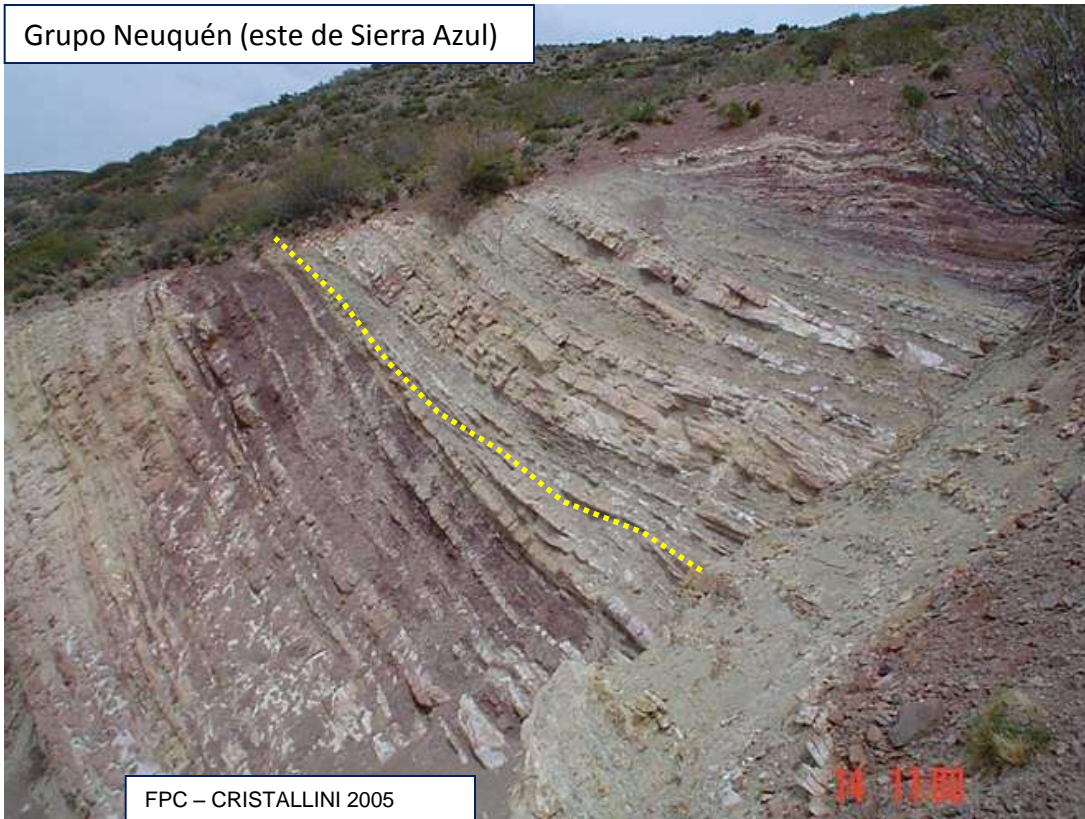


# DISCORDANCIA PROGRESIVA COMPUESTA (Riba, 1976)





Grupo Neuquén (este de Sierra Azul)

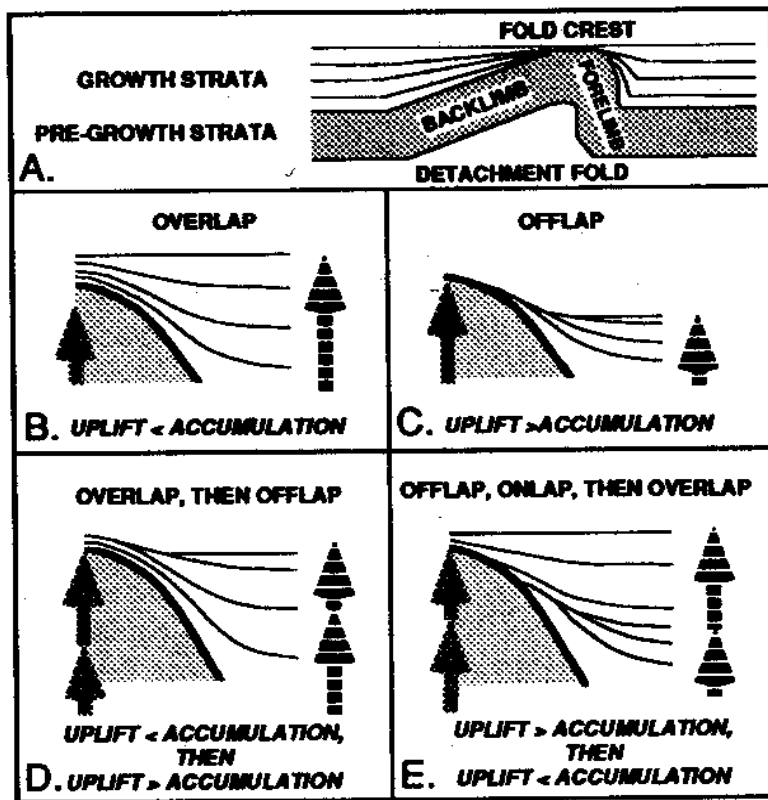




Discordancias  
progresivas. Fm  
Mogna, La  
Rinconada,  
Precordillera de San  
Juan

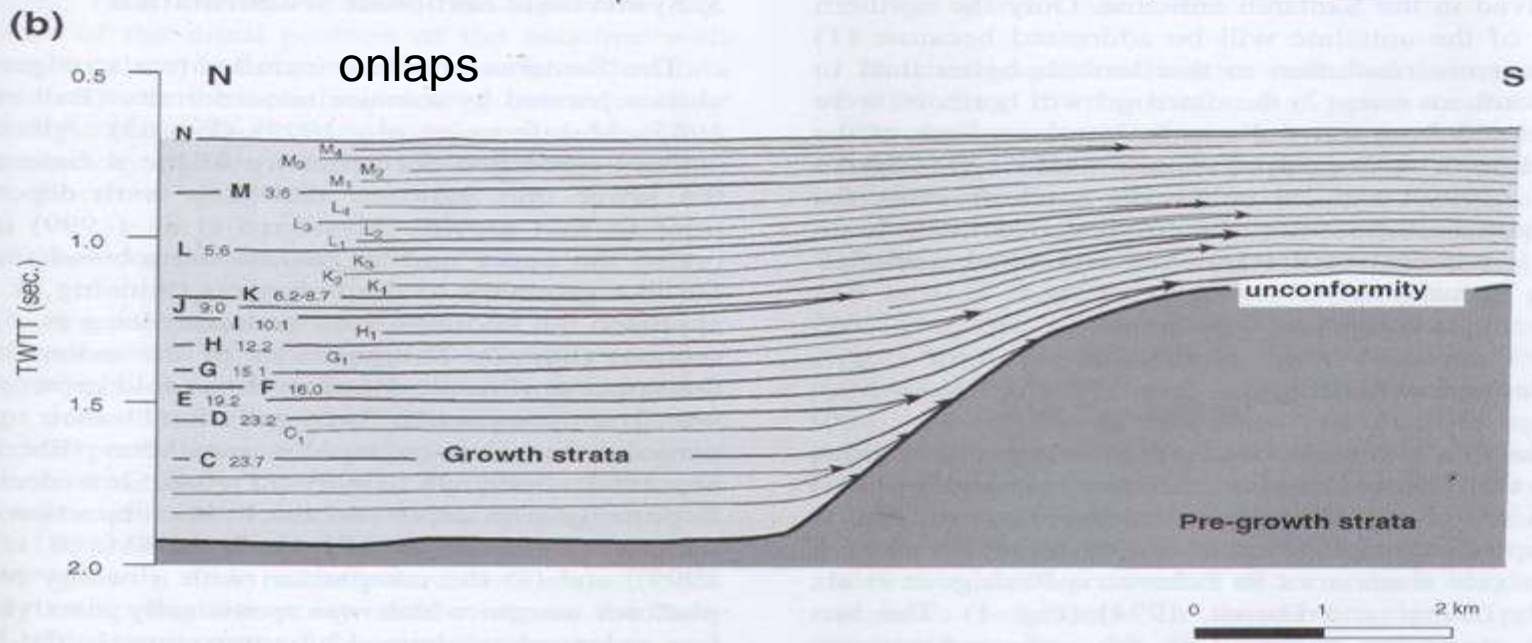
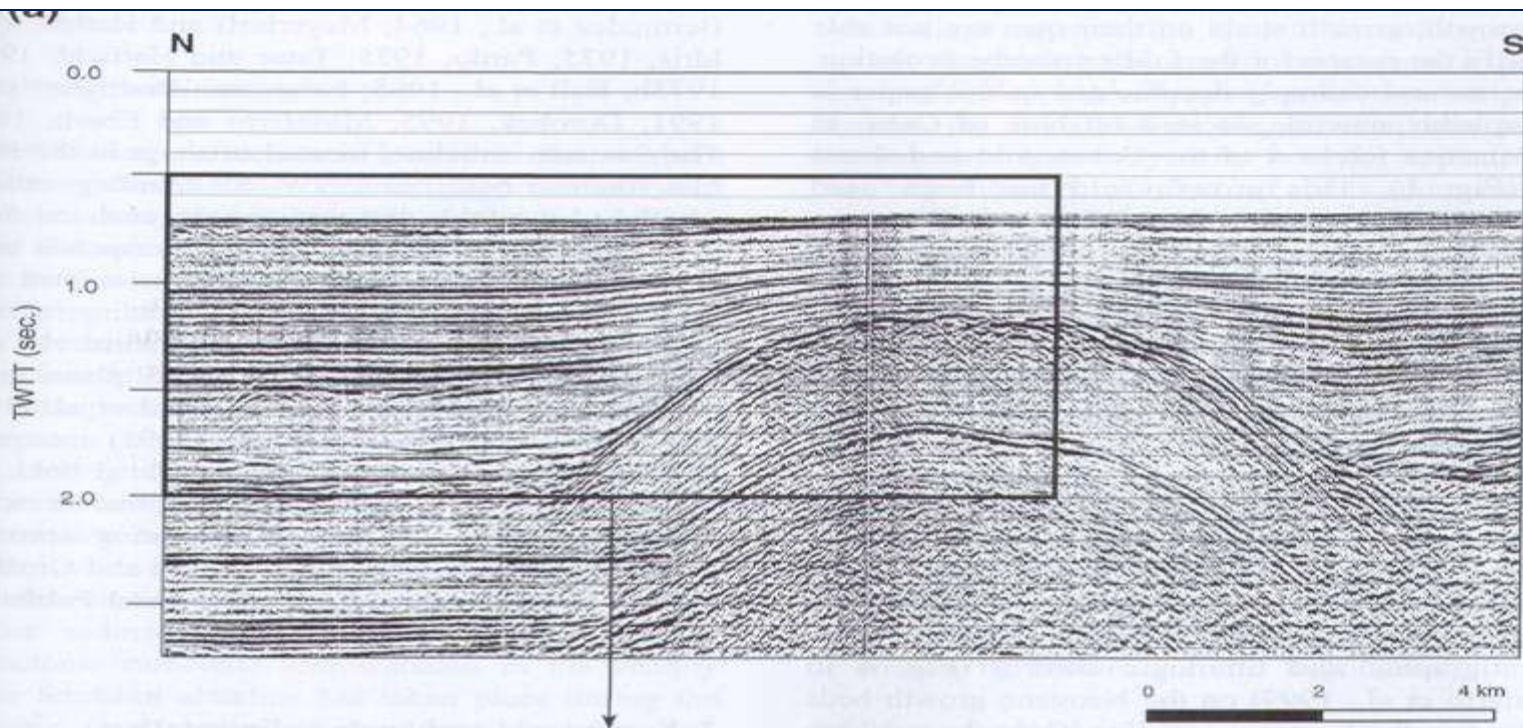


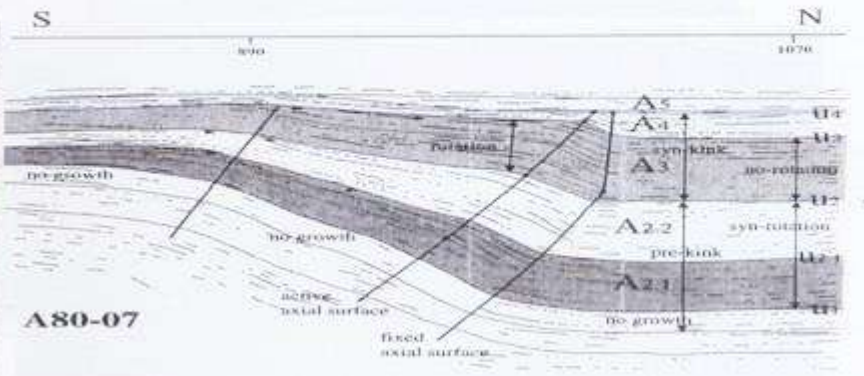
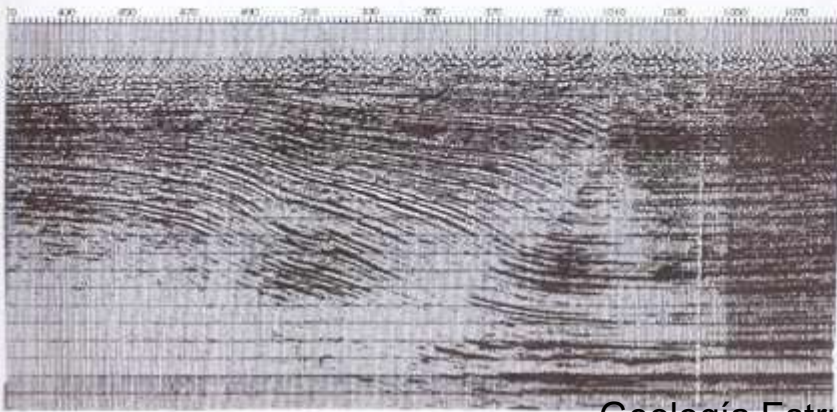
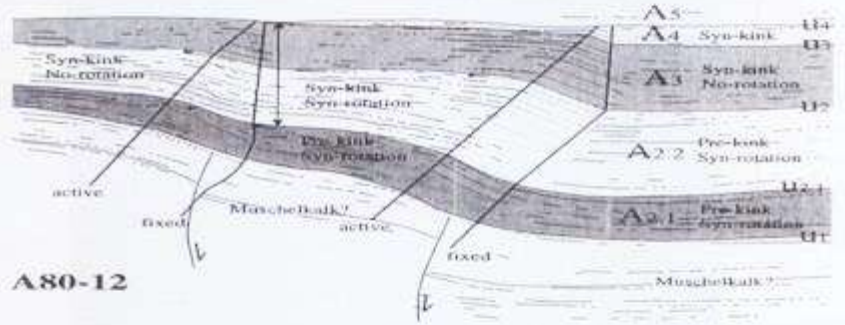
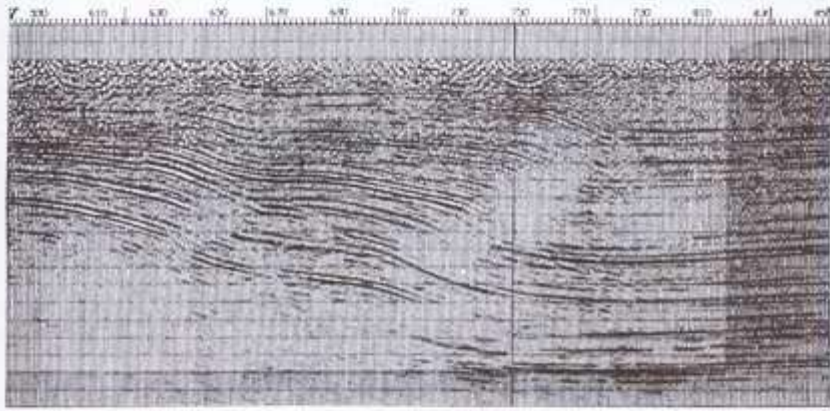
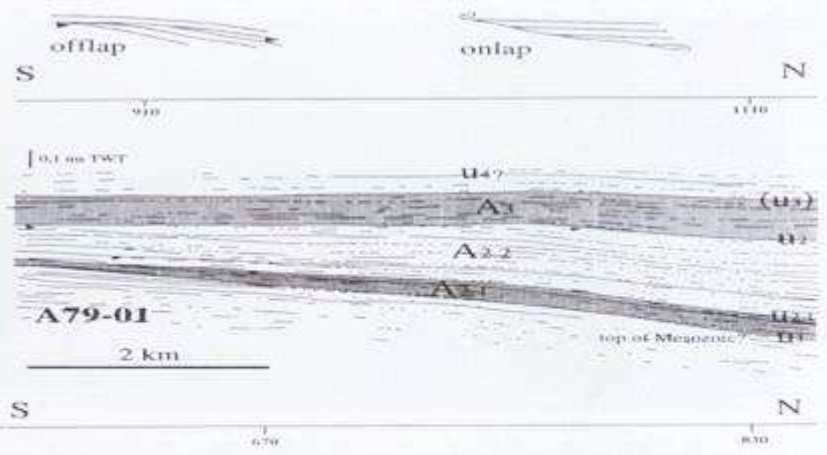
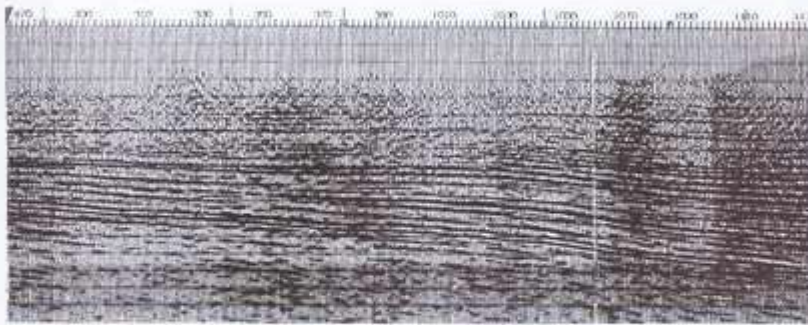
Anticlinal Montecito  
Sierra de Las Peñas  
Precordillera de Mendoza



Estratos de crecimiento y discordancias progresivas asociadas a sedimentación contemporánea con plegamiento activo. Tomado de Burbank y Vergés, 1994.

**Figure 5.** (a) Nomenclature for a detachment fold and growth strata deposited during folding. (b)-(e) Models of overlap, offlap, and onlap. Predictable geometries of syntectonic strata result from contrasts in the relative rates of crestal uplift versus coeval rates of accumulation. Crestal uplift is measured with respect to either (1) the base of the syntectonic strata adjacent to the fold or (2) the position of correlative marker beds found in both the anticline and the adjacent syncline. When rates of accumulation are consistently greater than the rate of crestal uplift, overlap will occur (Figure 5b), whereas lower rates of accumulation versus uplift lead to offlap (Figure 5c). Reversals in the relative magnitude of these rates causes a switch in the bedding geometry (Figure 5d). Onlap (Figure 5e) occurs following offlap and a change to more rapid accumulation rates.





### **Bibliografía complementaria sugerida:**

<https://www.seismicatlas.org/>

<http://folk.uib.no/nglhe/StructuralGeoBook.html>

Burbank, D. y Vergés, J., 1994. Reconstruction of topography and related depositional systems during active thrusting. *Journal of Geophysical Research*, 99: 20.281-20.297.

Davis, G., 1984. *Structural geology of rocks and regions*, J. Wiley.

Hatcher, R., 1990. *Structural geology*. Merrill.

McClay, K., 1987. *The mapping of geological structures*. J. Wiley.

Roberts, J., 1982. *Geological maps and structures*, Pergamon Press.

Actualizado: 15.11.2020